

Quick Start Guide

COOLPIX 5700

DIGITAL CAMERA



En

- Step 1 — Unpack the camera**
Step 2 — Charge the battery
Step 3 — Ready the camera
Step 4 — Take pictures
Step 5 — Check the results

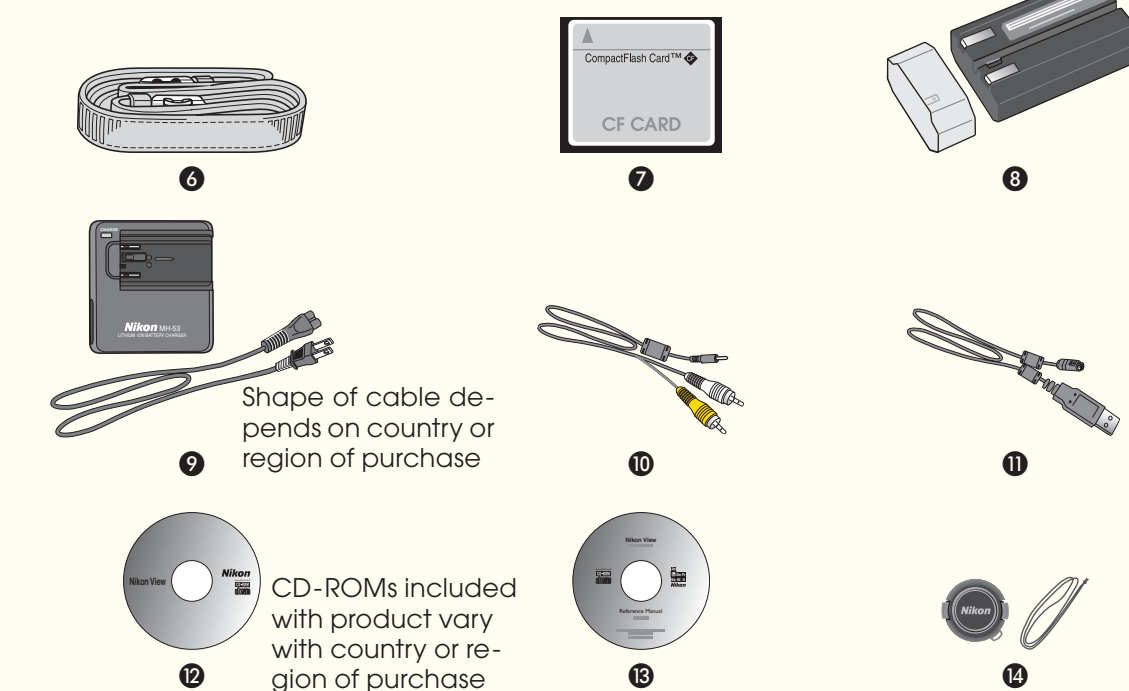
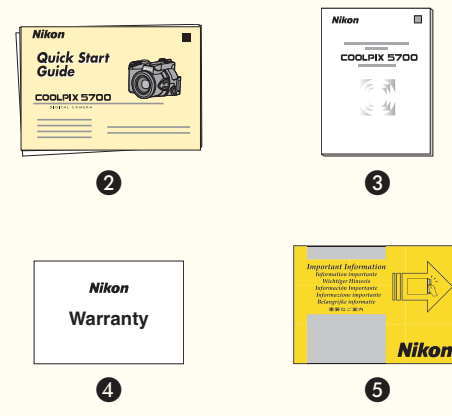
This guide outlines all the basic steps necessary to take pictures with your COOLPIX 5700. Read the instructions below to learn how to set-up your camera, take and review pictures. The reverse side of this guide explains how to install Nikon View and transfer your pictures to a computer.

Step 1

Unpack the camera

Take the camera and accessories out of the box. Check that you have all the items listed below.

- COOLPIX 5700 digital camera
- Quick Start Guide (this guide)
- Guide to Digital Photography with the COOLPIX 5700
- Warranty
- "Important Information" envelope
- Camera strap
- CompactFlash™ memory card
- Rechargeable EN-EL1 battery with terminal cover
- MH-53 battery charger
- Audio/Video cable
- USB interface cable
- Nikon View installer CD-ROM
- Nikon View reference manual CD-ROM
- Lens cap with cord



Use Only Nikon Brand Electronic Accessories

Your Nikon COOLPIX digital camera is designed to the highest standards and includes complex electronic circuitry. Only Nikon brand electronic accessories (including battery chargers, batteries, and AC adapters) certified by Nikon specifically for use with your Nikon digital camera are engineered and proven to operate within the operational and safety requirements of this electronic circuitry.

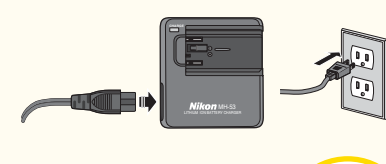
THE USE OF NON-NIKON ELECTRONIC ACCESSORIES COULD DAMAGE YOUR CAMERA AND MAY VOID YOUR NIKON WARRANTY.

For more information about Nikon brand accessories, contact your local authorized Nikon dealer.

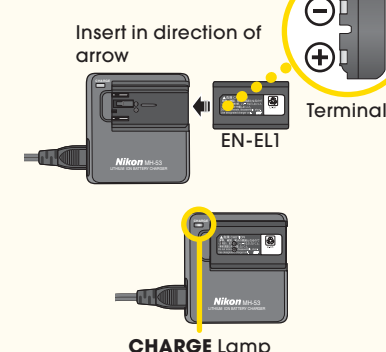
Step 2

Charge the battery

- Connect the power cable (provided) to the MH-53 battery charger and plug the charger into an AC power source. Charging will begin when the EN-EL1 rechargeable battery is inserted. Slide the battery into the charger terminals first (as shown right).



- The CHARGE lamp on the charger will blink while the battery charges. Charging is complete when the CHARGE lamp remains lit.



CHARGE Lamp

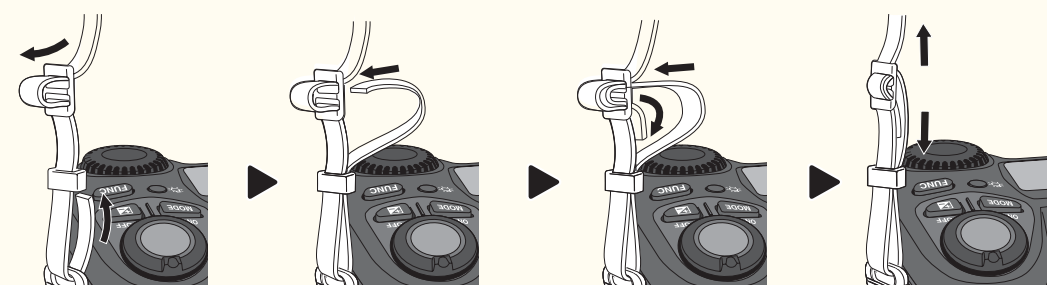


An exhausted battery can be fully recharged in approximately 2 hours.

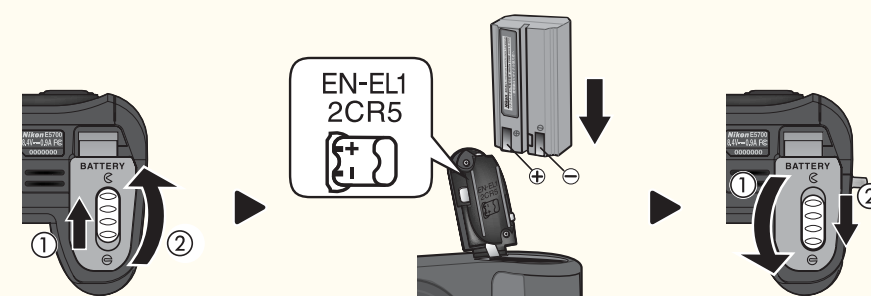
Step 3

Ready the camera

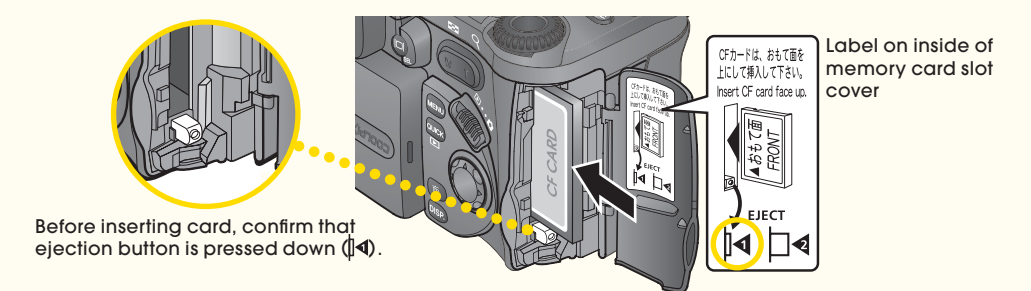
- Attach the camera strap as shown. Repeat for other eyelet.



- Slide the battery-chamber cover latch on the bottom of the camera to the open position (C) and open the battery-chamber cover as shown below. Insert the battery as shown by the label on the inside of the battery-chamber cover. Close the cover, and return the latch to the closed position (C).



- Open the memory card-slot cover. Confirm that the eject button is pressed down, then insert the card fully into the card-slot as shown in the label on the inside of the card-slot cover. Once the card is fully inserted, close the card-slot cover.

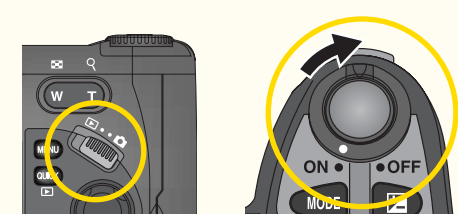


Memory cards are labeled with an arrow(s) showing the direction of insertion. With this label facing the back of the camera (the side with the monitor), insert the card in the direction of the arrow, sliding it in until it is firmly in place.

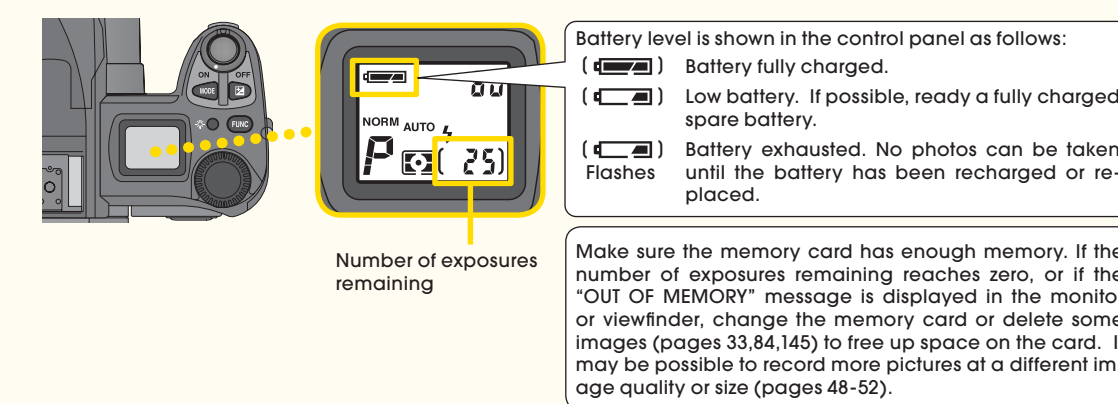


The memory card provided with your camera is formatted at shipment. Other memory cards must be formatted before first use. See the Guide to Digital Photography, page 135.

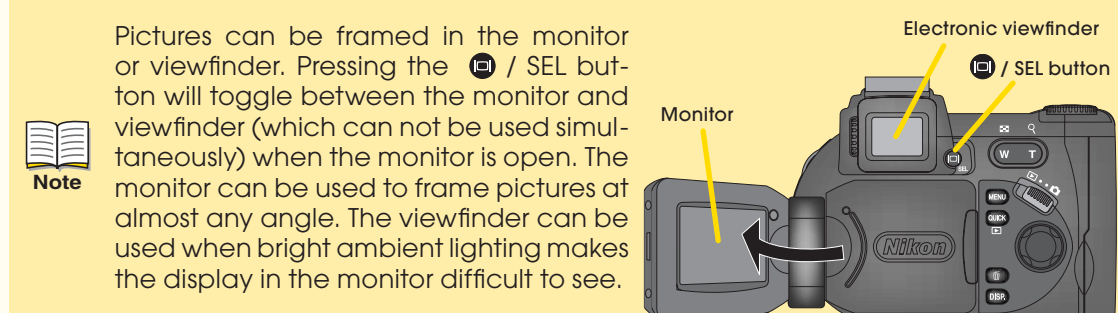
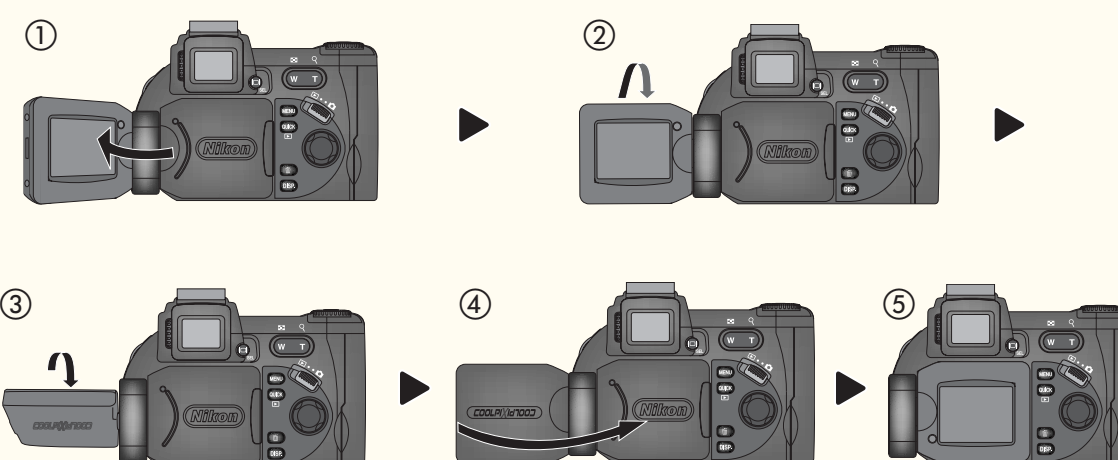
- Remove the lens cap and slide the mode selector on the back of the camera to (shooting) mode. Turn the camera on.



- Use the control panel to check the battery level and the number of exposures remaining.



- Open the monitor.



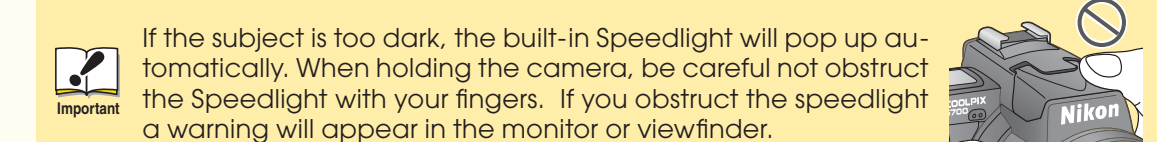
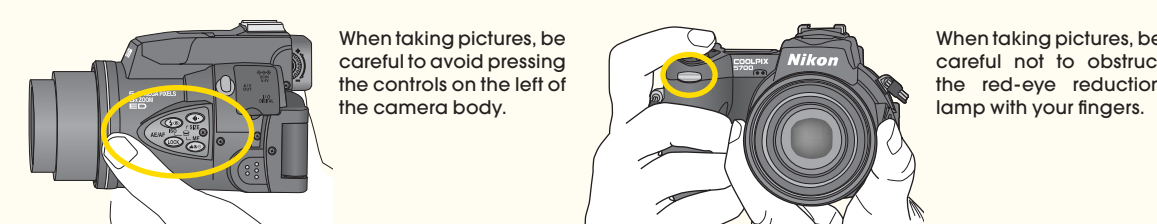
The first time you use the camera, the date and time will not be set, and a flashing clock icon (C) will appear in the monitor. For more information, see the Guide to Digital Photography, page 20.

Step 4

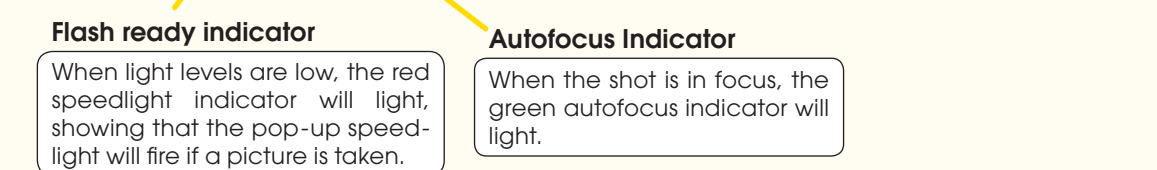
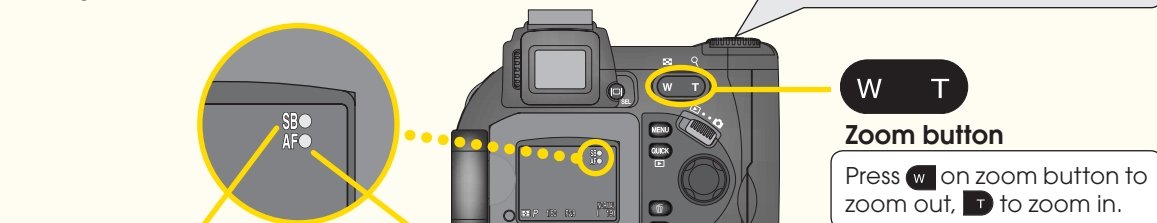
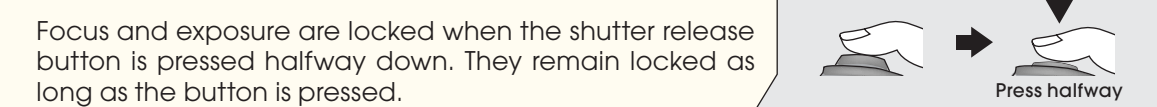
Take pictures

The steps below explain how to take pictures in User Set A, the automatic point and shoot mode, where most of the settings are controlled by the camera. When you first use the camera, it is set to User Set A by default. For more information about choosing a User Set, refer to Guide to Digital Photography, page 68.

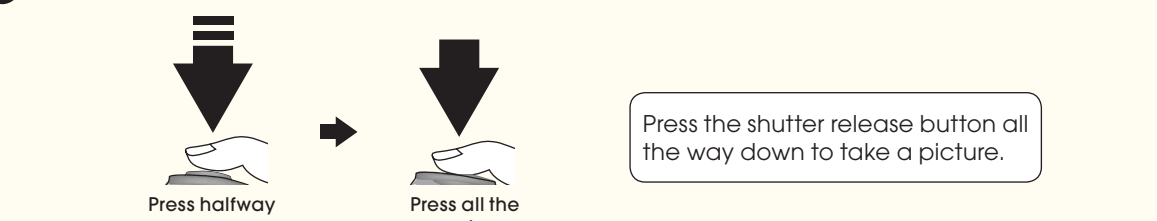
- Hold the camera steady with both hands to prevent camera movement from blurring your pictures.



- After framing the shot in the monitor or viewfinder by moving the camera or using the zoom button, press the shutter-release button halfway and check that the camera is in focus.



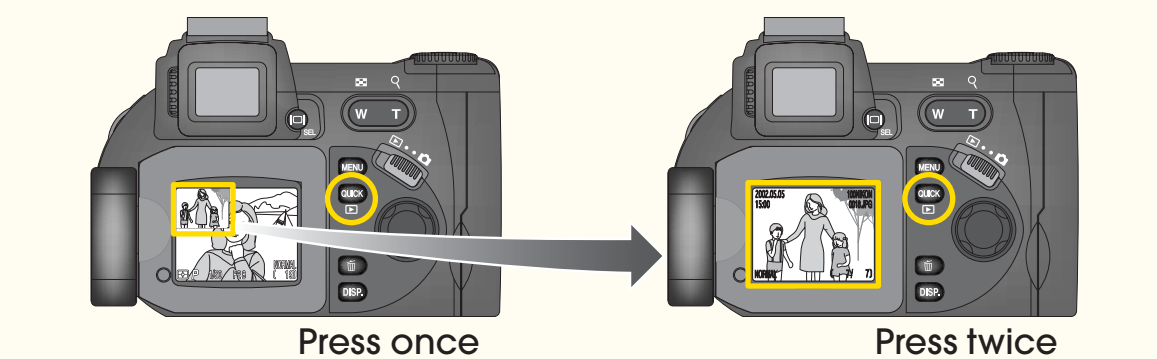
- Press the shutter-release button the rest of the way down to take a picture.



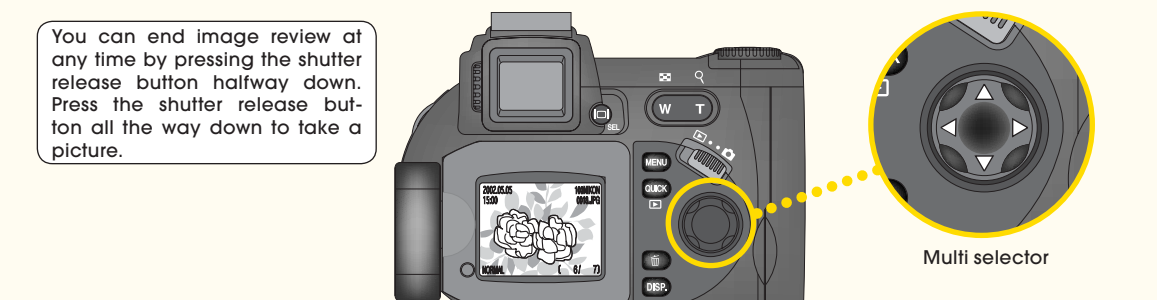
Step 5

Check the results

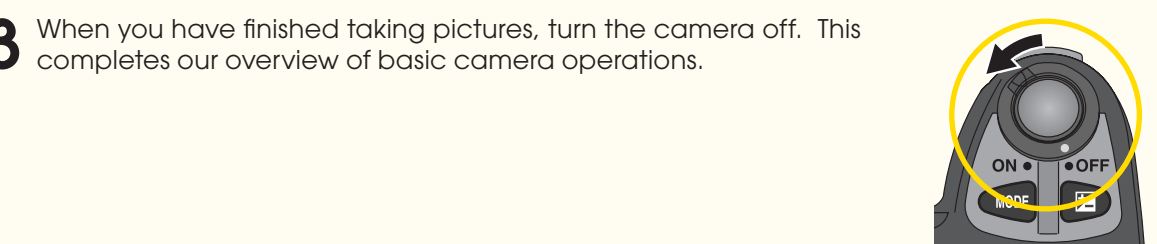
- Press the (REV) button to view the last picture stored on the memory card.



- Press the multi selector down (▼) or right (▶) to view pictures in the order that they were recorded. Press the multi selector up (▲) or left (◀) to go back.



- When you have finished taking pictures, turn the camera off. This completes our overview of basic camera operations.



For information on transferring your pictures to a computer, see the reverse side of this sheet. To make the most of all the features of your Nikon digital camera, be sure to read the Guide to Digital Photography.

Parts of the COOLPIX 5700

Refer to this illustration for a quick introduction to the parts of the camera and their functions. To learn more, see the Guide to Digital Photography.

Microphone and speaker

The COOLPIX 5700 can record movies up to 60 seconds in length (Guide to Digital Photography, page 77). Sound is automatically recorded with the microphone when you make a movie, and played back over the speaker when the movie is viewed.

Flash mode button

Selects a flash mode from auto, flash cancel (off), auto with red-eye reduction, fill-flash or slow sync.

Diopter adjustment dial

Adjusts viewfinder focus. Use when the view in the viewfinder appears blurred.

Image Quality/Size button

Sets image quality, or together with command dial to set image size.

Focus mode button

Selects either autofocus, infinity, macro close-up or self timer mode.

AE/AF Lock button

Locks focus and exposure.

Speaker

Plays back movie sound.

Built-in Speedlight

Pops up automatically if the subject is too dark (except in flash cancel mode).

Microphone

Records sound when you make movies.

Power switch

Shutter-release button

Exposure mode button

Press while rotating command dial to select an exposure mode.

Exposure compensation button

Alters exposure from the value suggested by the camera.

Function button

Changes user set (default settings). Can also be used to adjust other settings of your choice.

Control panel

Shows status of camera settings.

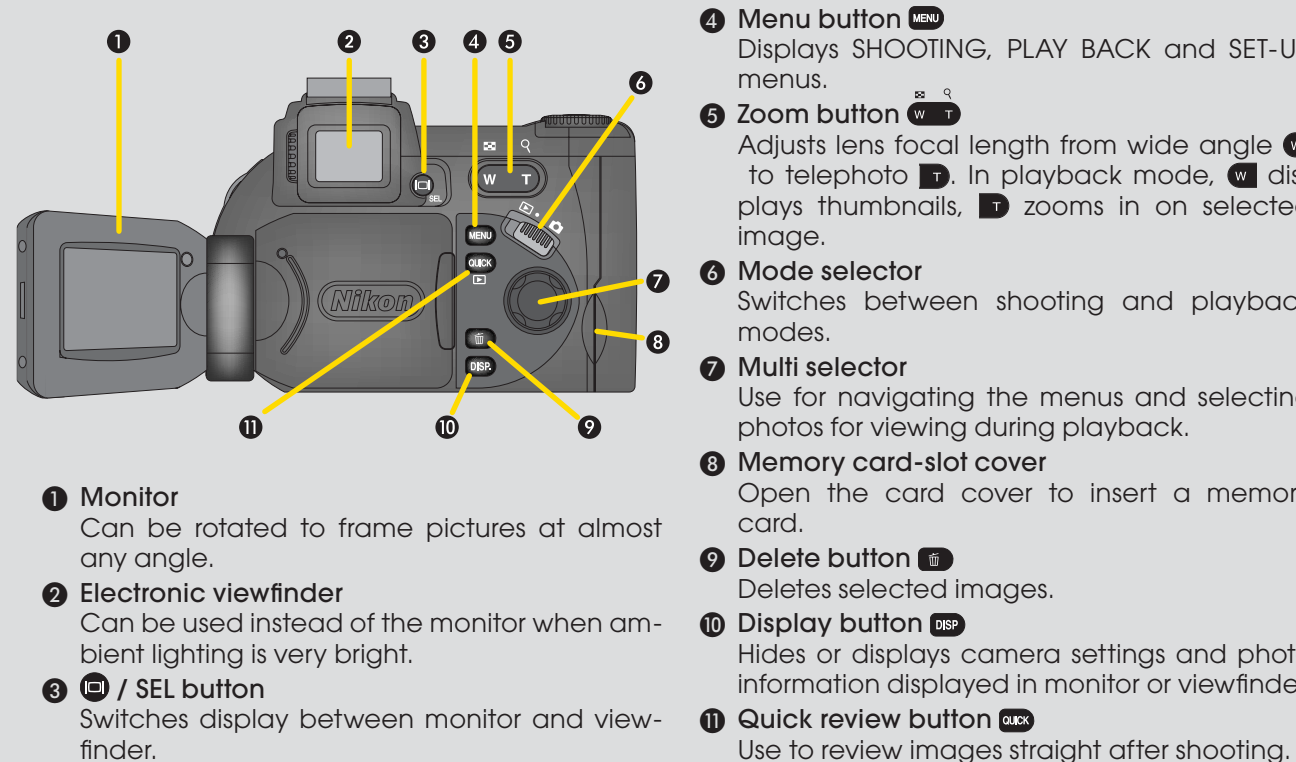
LCD illuminator button

Illuminates the control panel display.

Command dial

Use by itself or in combination with other buttons to adjust camera settings.

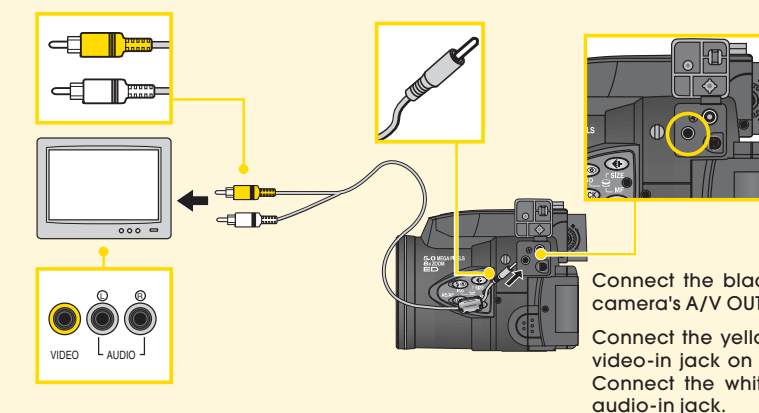
Other Camera Controls



Viewing pictures on a TV

Using the Audio/Video cable provided with your camera, you can connect the COOLPIX 5700 to a television set. Sound recorded with movies will be played back through the television speakers. To learn more, see the Guide to Digital Photography, page 46.

- Connect the camera to the television as shown in the illustration.



- Slide the mode selector on the back of the camera to playback (REV) mode, then turn the camera on. The television screen will display your most recent picture. When viewing pictures on a television screen, the camera monitor and viewfinder will be blank.

► Viewing Pictures on a Computer

Supported Operating Systems:	Windows	•Windows XP Home Edition/Windows XP Professional	•Windows 2000 Professional
	(pre-installed versions only)	•Windows Millennium Edition (Me)	•Windows 98 Second Edition (SE)
	Macintosh	•Mac OS X (10.1.2 or later)	•Mac OS 9.0-9.2

Step1 Install Nikon View

Depending on the version of Nikon View installed, the installation process and the dialogs and messages displayed may differ from those described here.

Before Installing Nikon View:

- Turn off any virus-checking software
- Exit all other applications that may be running

Uninstall Existing Versions of Nikon View and Nikon Capture Version 1.x

Before installing Nikon View, you will need to uninstall Nikon Capture version 1.x (if installed) and any earlier versions of Nikon View.

Windows XP Home Edition, Windows XP Professional, Windows 2000 Professional, Mac OS X

When installing, using, or uninstalling Nikon View, log on as the "Computer administrator" (Windows XP Home Edition, Windows XP Professional), "Administrator" (Windows 2000 Professional) or "Admin" (Mac OS X).

Connecting the Camera to a Computer

Be sure to install Nikon View *before* connecting the camera to your computer. If the Add New Hardware Wizard is displayed when the camera is connected, click Cancel to exit the wizard.

Windows

1 Turn the computer on and wait for the operating system to start up.

2 Insert the Nikon View installer CD-ROM into the CD-ROM drive. The Install Center program will launch automatically and a language selection dialog will be displayed. Select a language and click **Next**.

If the Language Selection Dialog Is Not Displayed

Select My Computer from the Start menu (Windows XP Home Edition/Windows XP Professional; in other versions of Windows, double-click the My Computer icon on the desktop) and double-click the CD-ROM (NKVIEW6) icon in the "My Computer" window.

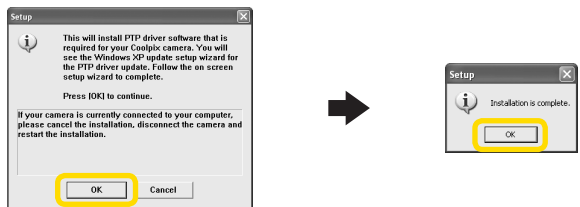
3 Click **Easy Install**. The standard install includes:

- PTP driver (Windows XP only)
- Coolpix Camera Drivers (Mass Storage driver) (Windows 98 SE only)
- Panorama Maker
- Quick Time 5
- Nikon View

4 The first components to be installed are the camera drivers. What drivers are installed depends on your computer's operating system.

Windows XP Home Edition/Windows XP Professional

Follow the on-screen instructions to install the PTP driver. On some systems a Microsoft Wizard may install the PTP driver. Click **"Finish"** or **"OK"** after the installation of the PTP driver.

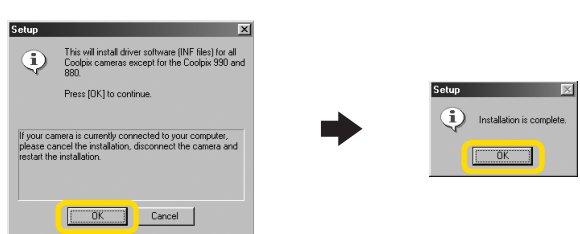


Windows 2000 Professional/Windows Millennium Edition (Me)

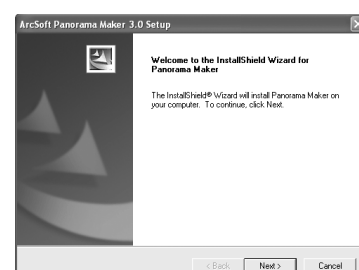
No drivers are installed. Proceed to Step 5.

Windows 98 Second Edition (SE)

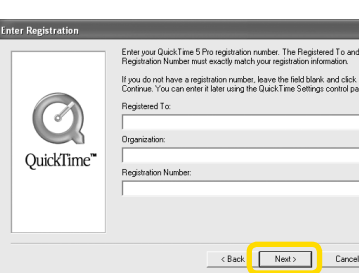
Follow the on-screen instructions to install the Coolpix Camera Drivers.



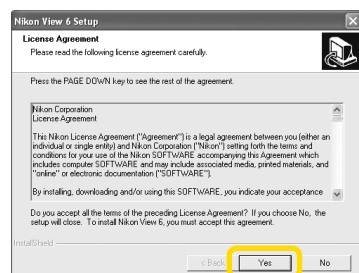
5 Installation of Panorama Maker opens with a language selection dialog. Choose a language and click **OK**. The opening dialog of the Panorama Maker install wizard will be displayed; follow the on-screen instructions to complete installation.



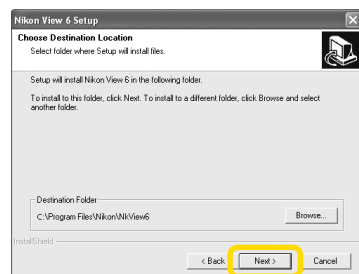
6 Installation will continue with Quick Time 5. No registration number is required; leave the registration information blank and click **Next**.



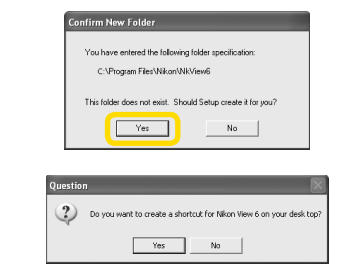
7 The Nikon View setup program will now start. After reading the license agreement, click **Yes** to accept the agreement and proceed with installation.



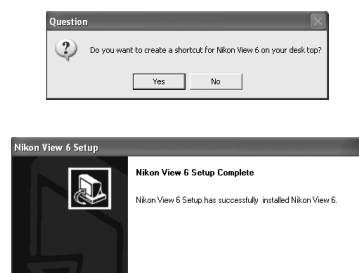
8 The destination folder for Nikon View will be displayed under "Destination Folder". Click **Next** to install Nikon View to this folder, or click **Browse** to select another destination.



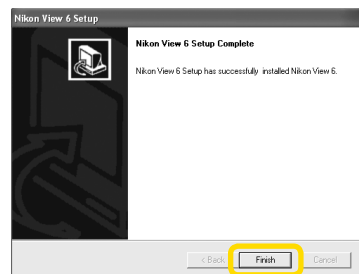
9 Click **Yes** to create the destination folder.



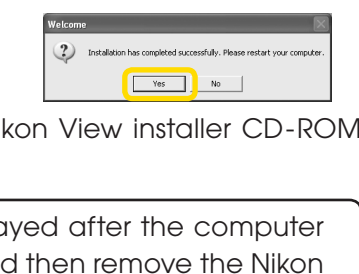
10 Click **Yes** to create a shortcut to Nikon View on the desktop, **No** to proceed without creating a desktop shortcut.



11 Click **Finish** to exit the Nikon View installer.

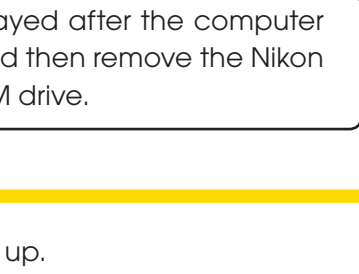


12 Click **Yes** to restart your computer.



13 After the computer restarts, remove the Nikon View installer CD-ROM from the CD-ROM drive.

If the "Select Language" dialog is displayed after the computer restarts, click **Quit** to close the dialog and then remove the Nikon View installer CD-ROM from the CD-ROM drive.



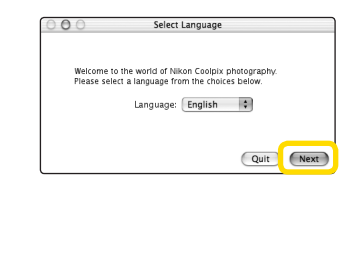
Macintosh

1 Turn the computer on and wait for it to start up.

2 Insert the Nikon View installer CD-ROM into the CD-ROM drive.

Mac OS X

After inserting the Nikon View installer CD-ROM into the CD-ROM drive, double-click the CD-ROM (Nikon View 6) icon on the desktop and then double-click the Welcome icon. A language-selection dialog will be displayed; select a language and click **Next**.

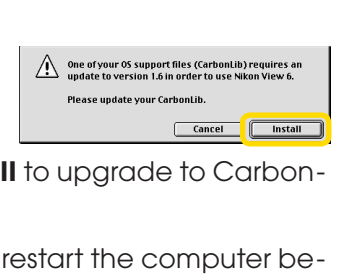


Mac OS 9

The language-selection dialog will be displayed automatically when you insert the Nikon View installer CD-ROM.

CarbonLib (Mac OS 9 Only)

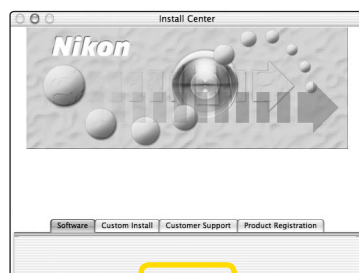
CarbonLib 1.5 or later is required to install this Nikon software. If the installer detects an earlier version of CarbonLib, a message will be displayed. Click **Install** to upgrade to CarbonLib 1.6.



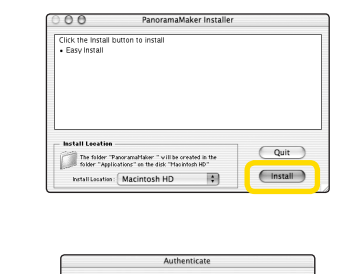
Once installation is complete, be sure to restart the computer before going on to install Nikon software.

3 Click **Easy Install** to begin installation of the following software:

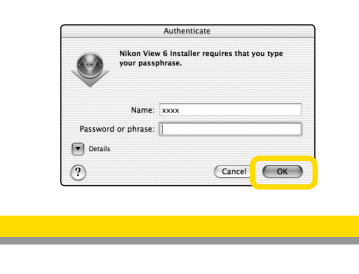
- Panorama Maker
- Nikon View
- Quick Time 5 (Mac OS 9 only)



4 Follow the on-screen instructions to install Panorama Maker.

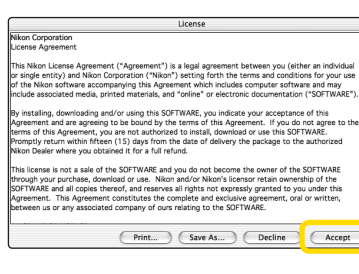


5 Enter your administrator name and password and click **OK** (Mac OS X only).

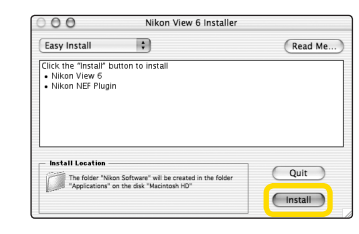


Pictures taken with your COOLPIX 5700 can be transferred to a computer, where they can be viewed and organized. To transfer your pictures, you will need to install Nikon View as described below. For complete instructions on using Nikon View, see the *Nikon View Reference Manual* (on CD-ROM).

6 Installation of Nikon View opens with a license agreement. Click **Accept** to accept the agreement and proceed with installation. The Nikon View "ReadMe" will then be displayed. This document contains important information; be sure to read it thoroughly before clicking **Continue** to proceed with installation.



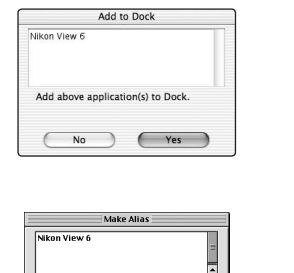
7 Click **Install** to install Nikon View.



8 Add Nikon View to the Dock or create an alias on the desktop.

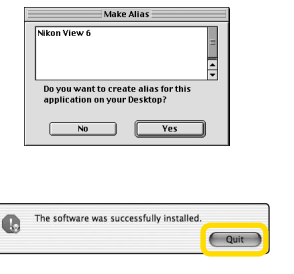
Mac OS X

Click **Yes** to add Nikon View to the Dock, **No** to proceed without adding Nikon View to the Dock.

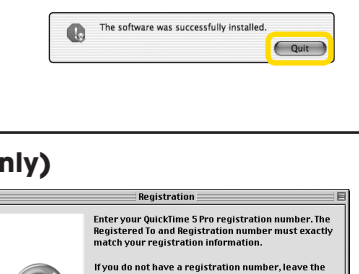


Mac OS 9

Click **Yes** to create an alias for Nikon View on the desktop, **No** to proceed without creating an alias.

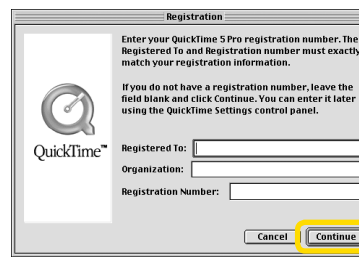


9 Click **Quit** to complete installation of Nikon View.

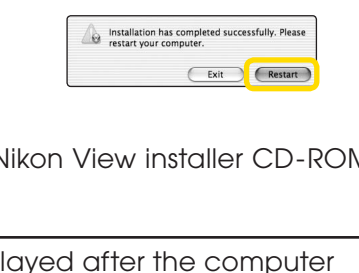


Installing Quick Time 5 (Mac OS 9 Only)

Under Mac OS 9, installation of Quick Time 5 will begin when installation of all other software is complete. Follow the on-screen instructions to complete installation. When the Registration dialog is displayed, click **Continue**. Do not supply registration information.

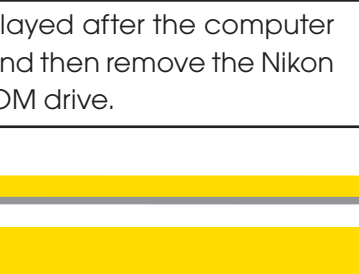


10 Click **Restart** to restart your computer.



11 After the computer restarts, remove the Nikon View installer CD-ROM from the CD-ROM drive.

If the "Select Language" dialog is displayed after the computer restarts, click **Quit** to close the dialog and then remove the Nikon View installer CD-ROM from the CD-ROM drive.

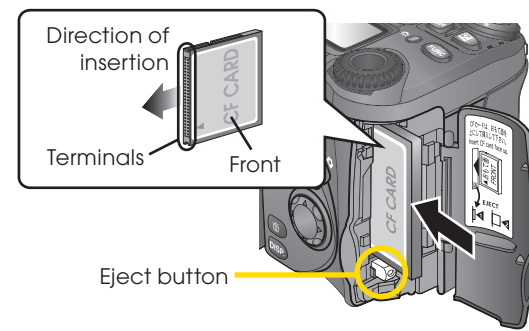


Step2 Transfer pictures

Use a Reliable Power Source

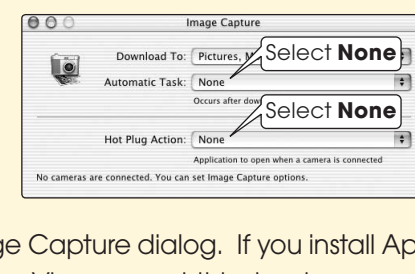
When transferring pictures between the camera and the computer, use a fully-charged EN-EL1 battery. If in doubt, charge the battery before beginning transfer or use an EH-53 AC adapter or EH-21 AC adapter/battery charger (available separately). Do not, under any circumstances, use another make or model of AC adapter.

1 After turning the camera off, open the memory card slot cover on the side of the camera and check that the eject button is pressed all the way down. Insert a memory card as shown in the label on the inside of the memory card slot cover, closing the cover once the card is fully inserted. The memory card should contain at least one picture.



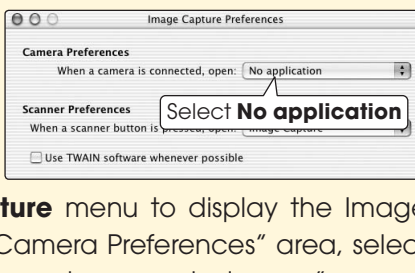
Mac OS X (Version 10.1.2-10.1.5)

Before connecting the camera, select **Applications** from the Finder **Go** menu and double-click the **Image Capture** icon. The Image Capture dialog will be displayed. Select **None** from the **Automatic Task** and **Hot Plug Action** menus and close the Image Capture dialog. If you install Apple iPhoto software after you install Nikon View, repeat this step to prevent both iPhoto and Nikon View from starting when you connect your camera.

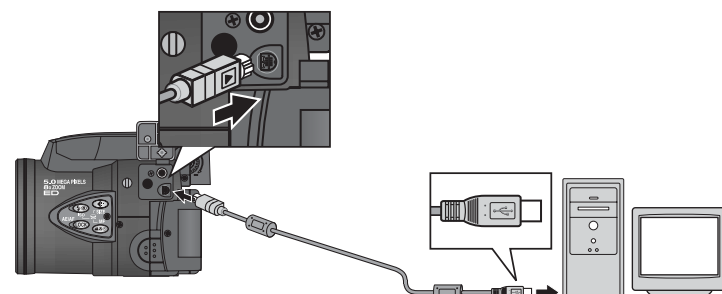


Mac OS X (Version 10.2 or later)

Before connecting the camera, select **Applications** from the Finder **Go** menu and double-click the **Image Capture** icon. The Image Capture dialog will be displayed. Select **Preferences...** from the **Image Capture** menu to display the Image Capture Preferences dialog. In the "Camera Preferences" area, select **No application** from the "When a camera is connected, open" menu.



2 Use the UC-E1 USB cable to connect the camera to the computer as shown in the illustration.



USB Hub

The camera may not function as expected when connected via a USB hub or keyboard.

► Nikon View

Nikon View is made up of four components: Nikon Transfer, Nikon Browser, Nikon Viewer, and Nikon Editor. More information on Nikon View can be found using on-line help or by reading the *Nikon View Reference Manual* included on the reference CD-ROM provided with your camera.

Pictures taken with your Nikon digital camera

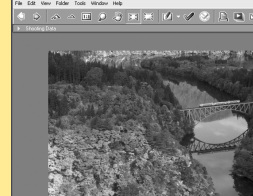


When you connect the camera, Nikon Transfer will start automatically.

Nikon Transfer

Nikon Transfer is used to transfer (copy) to your computer the pictures stored on the camera memory card.

Nikon Viewer



Use Nikon Viewer to inspect your pictures in detail.

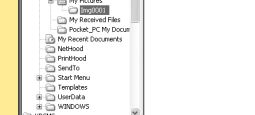
Nikon Editor



Use Nikon Editor to edit your pictures.

Nikon Browser

Nikon Browser lists the pictures on your computer as thumbnail images (appearance of Nikon Browser window may differ slightly in some areas).



The functional example of Nikon View

E-mail

Upload

Not available in some areas.

Print

Slide shows

Find pictures

HTML output

* Illustrations are for Windows XP.

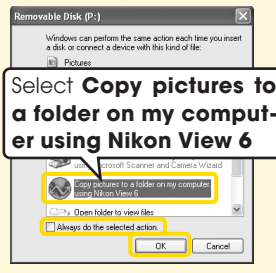
3 Turn the camera on.

Windows

The camera will automatically be recognized and registered as a new device. Once the camera has been registered, the Nikon Transfer component of Nikon View will be displayed in the computer monitor. The camera monitor will remain blank.

AutoPlay (Windows XP Home Edition/Windows XP Professional)

A Removable Disk dialog will be displayed when the camera is turned on. Select **Copy pictures to a folder on my computer using Nikon View 6** and click **OK** to start Nikon View. To bypass this dialog in the future, check **Always do the selected action**.

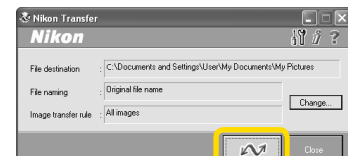


See "Troubleshooting" in the *Nikon View Reference Manual* for information on what to do if Nikon Transfer fails to start automatically.

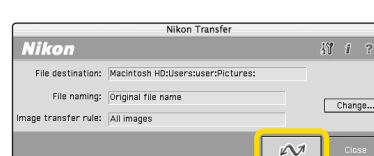
Macintosh

The Nikon Browser component of Nikon View will start, followed by Nikon Transfer. The camera monitor will remain blank.

4 Click the button in the Nikon Transfer window. All pictures on the memory card will be transferred to your computer.



Windows

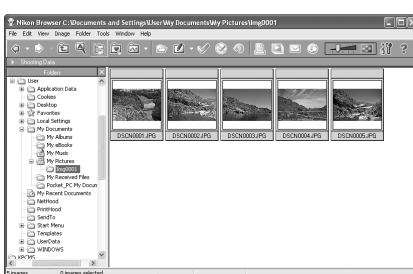


Macintosh

5 Once transfer is complete, your pictures will be displayed in the Nikon Browser component of Nikon View.

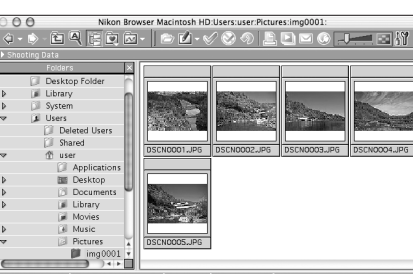
Windows

The default destination folder for transferred pictures is the My Pictures or My Documents folder. Pictures will have file names of the form "Imgnnnn", where "nnnn" is a four-digit number assigned automatically in ascending order by Nikon View, starting from 0001.



Macintosh

The default destination folder for transferred pictures is the Pictures folder (Mac OS X) or the Documents folder (Mac OS 9). Pictures will have file names of the form "Imgnnnn", where "nnnn" is a four-digit number assigned automatically in ascending order by Nikon View, starting from 0001.



6 Once your pictures are displayed in Nikon Browser, transfer is complete and you can remove the camera from the system.

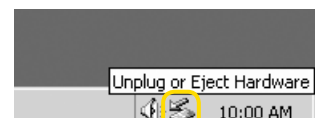
Windows XP Home Edition/Windows XP Professional

Click the "Safely Remove Hardware" icon in the taskbar and select **Safely remove USB Mass Storage Device** from the menu that appears.



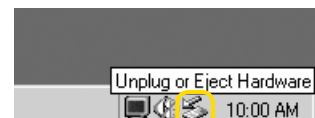
Windows 2000 Professional

Click the "Unplug or Eject Hardware" icon in the taskbar and select **Stop USB Mass Storage Device** from the menu that appears.



Windows Millennium Edition (Me)

Click the "Unplug or Eject Hardware" icon in the taskbar and select **Stop USB Disk** from the menu that appears.



Windows 98 Second Edition (SE)

In My Computer, click with the right mouse button on the removable disk corresponding to the camera and select **Eject** from the menu that appears.

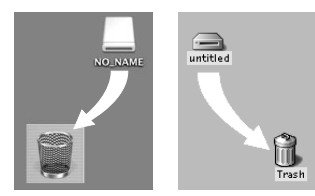


Mac OS X

Drag the "NO_NAME" camera volume into the Trash.

Mac OS 9

Drag the "untitled" camera volume into the Trash.



You can now turn the camera off and disconnect the USB cable.